



# Erosion & Sediment Control

Pittsylvania County • Danville, Virginia

Erosion & Sediment Control



*Synergy With Nature™*

# Erosion & Sediment Control

**Application:** Two Natural Gas Pipeline Exposures

**Owner:** Colonial Pipeline

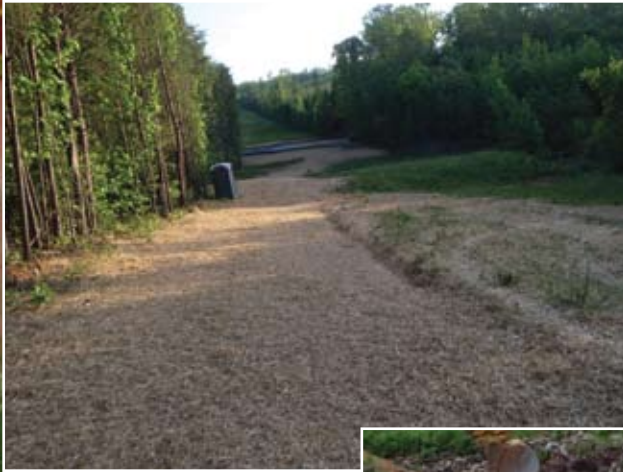
**General Contractor:** Submar

**Location:** Danville, Virginia, Pittsylvania County

**Size:** 5,000 Square Feet

In a small stream in Danville, VA a 32 inch natural gas pipeline and a 36 inch natural gas pipeline owned and operated by Colonial Pipeline Company had become exposed. The exposure was caused by headcuts migrating upstream from the Dan River. The headcuts have exposed the pipelines about 15 feet across the stream. Submar was called in because of several failed attempts to cover and protect the pipeline with rock. The previously placed rock has been continually washed downstream with very little material remaining.

Submar's solution was to straighten out the flow of the stream over the pipelines and install Submar revetment matting. On this site, a large trench box was utilized as a dam in order to perform pump-around activities which saved time and unnecessary disturbance of the stream banks. The US Army Corps of Engineers monitored the site in order to evaluate the performance of Submar's revetment mats. Special care was taken with regards to soil and erosion sediment control. Submar completed the project not only on time but also to the complete satisfaction of the US Army Corps of Engineers.



805 Dunn Street  
Houma, Louisiana 70360  
985.868.0001  
FAX 985.851.0108  
EMAIL: [submar@submar.com](mailto:submar@submar.com)  
[www.submar.com](http://www.submar.com)