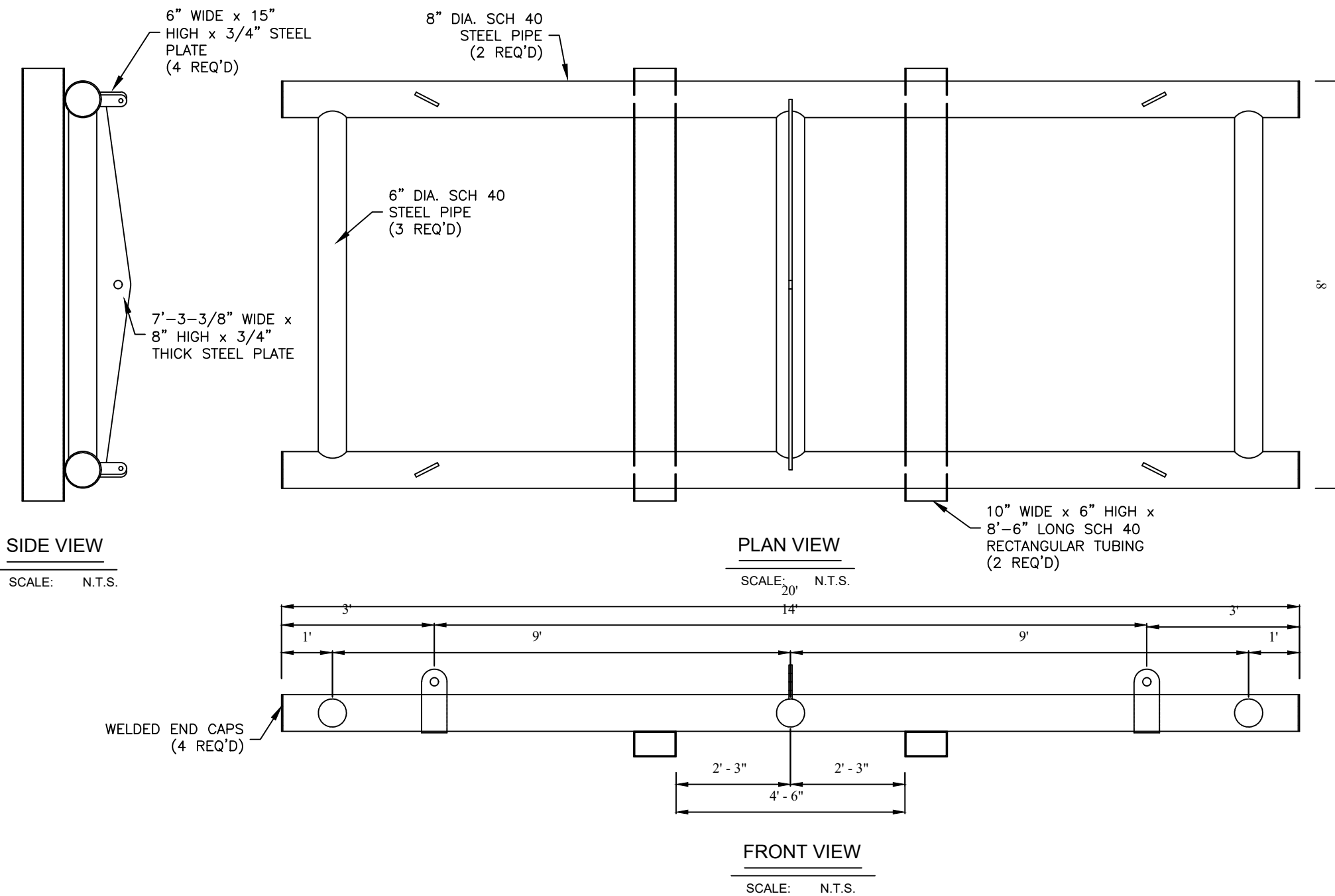


C:\USERS\VEROCH\ONE\DRIVE - SUBMAR\ENG_DEPT\AUTOCAD\DETAILS\UPDATED FRAMES (02.04.25)\20' MANUAL RELEASE\20' FMR_20 FT. MANUAL RELEASE_REV 5



SCALE: N.T.S.

THESE CONCEPTUAL DRAWINGS ARE PREPARED BY SUBMAR FOR ESTIMATING PURPOSES ONLY AND ARE NOT CONSTRUCTION DRAWINGS. THESE CONFIDENTIAL DRAWINGS MAY NOT BE COPIED UNLESS APPROVED BY SUBMAR, INC. COPYRIGHT © SUBMAR, INC. 2026 ALL RIGHTS RESERVED.

SPECIFICATIONS		
	IMPERIAL	METRIC
DIMENSIONS	8'x20'x1'	2.4mx6.1mx0.30m
FRAME EMPTY WEIGHT	2,080 lbs.	0.94 mt
WORKING LOAD LIMIT (WLL)	10.5 tn	9.52 mt

SUBMAR®
104 ROYAL OAK BLVD
THIBODAUX, LA 70301
PH. 985-868-0001
WEBSITE: WWW.SUBMAR.COM

No.	REVISION DESCRIPTION	DATE
2	NO CHANGES THIS SHEET	12/12/23
3	UPDATED SHEET INFO	01/29/25
4	UPDATED SHEET INFO	05/05/25
5	UPDATED SHEET INFO	03/15/26

DATE: 11/4/2016
DWN: MJP
PROJECT No:
CHK: BMC

20' MANUAL RELEASE HANDLING FRAME

SHEET TITLE:
ASSEMBLY

SHEET No:
FMR20-101

C:\USERS\VEROICHE\ONEDRIVE - SUBMAR\ENG_DEPT\AUTOCAD\DETAILS\UPDATED FRAMES (02.04.25)\20' MANUAL RELEASE\20' FT. MANUAL RELEASE_REV 5

SUBMAR®
 104 ROYAL OAK BLVD
 THIBODAUX, LA 70301
 PH. 985-868-0001
 WEBSITE: WWW.SUBMAR.COM

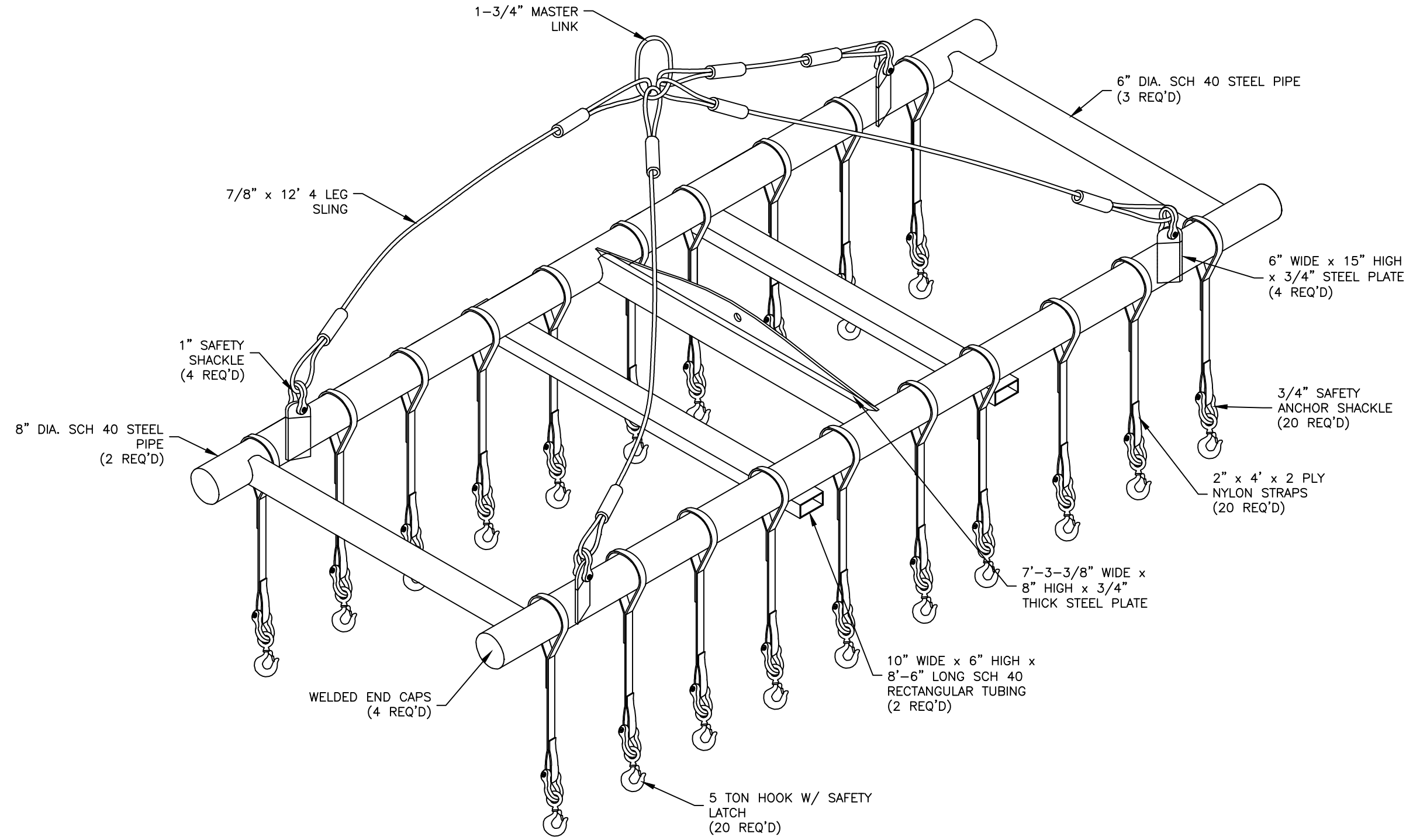
No.	REVISION DESCRIPTION	DATE
2	ADDED METRIC TABLE	12/12/23
3	UPDATED SHEET INFO	01/29/25
4	UPDATED SHEET INFO	05/05/25
5	UPDATED SHEET INFO	03/15/26

DATE: 11/17/2016	DWN: MJP
PROJECT No:	CHK: BMC

20' MANUAL RELEASE
 HANDLING FRAME

SHEET TITLE:
 ISOMETRIC

SHEET No:
 FMR20-103



SPECIFICATIONS		
	IMPERIAL	METRIC
DIMENSIONS	8'x20'x1'	2.4mx6.1mx0.30m
FRAME EMPTY WEIGHT (W/ RIGGING)	2,518 lbs.	1.14 mt
WORKING LOAD LIMIT (WLL)	10.5 tn	9.52 mt

THESE CONCEPTUAL DRAWINGS ARE PREPARED BY SUBMAR FOR ESTIMATING PURPOSES ONLY AND ARE NOT CONSTRUCTION DRAWINGS. THESE CONFIDENTIAL DRAWINGS MAY NOT BE COPIED UNLESS APPROVED BY SUBMAR, INC. COPYRIGHT © SUBMAR, INC. 2026 ALL RIGHTS RESERVED.

SCALE: N.T.S.